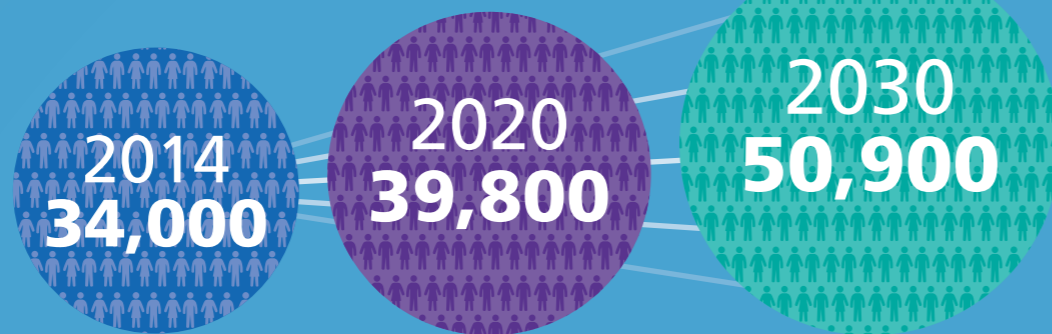


Dementia in North East England

Number of people with dementia



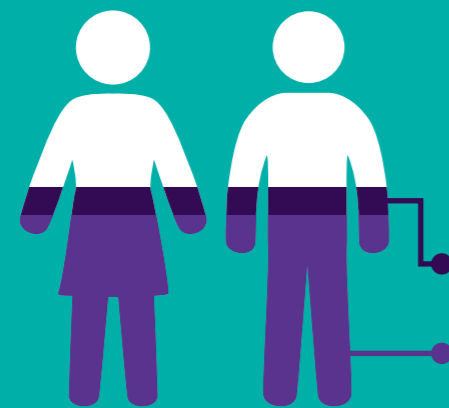
There is a well established North East Dementia Alliance



World leading dementia research taking place in the North East



Diagnosis



In 2013 the North East had a diagnosis rate above the national average - South Tyneside had achieved a two thirds diagnosis rate.

Regional average diagnosis rate 54%

National rate 48%



13 out of 14 memory services provide an assessment within 6 weeks of referral (target based on the Memory Service National Accreditation Programme)

191 registered domiciliary care providers in the North East



In May 2014 there were 18,599 beds in care and nursing homes providing a service for people with dementia (aged 65 years or older)



In 2014/15, staff in 240 out of 583 care/nursing homes, supporting those with dementia and/or who are aged 65 and over, will be offered person centred training



Percentage of adult social care workforce from the North East working with people with dementia at qualification level 2 / level 3 higher than England as a whole

